

ROBOTICS

Product specification

IRB 1510



Trace back information:
Workspace 24D version a4
Checked in 2024-12-09
Skribenta version 5.6.018

Product specification

IRB 1510

OmniCore

Document ID: 3HAC090252-001

Revision: C

The information in this manual is subject to change without notice and should not be construed as a commitment by ABB. ABB assumes no responsibility for any errors that may appear in this manual.

Except as may be expressly stated anywhere in this manual, nothing herein shall be construed as any kind of guarantee or warranty by ABB for losses, damage to persons or property, fitness for a specific purpose or the like.

In no event shall ABB be liable for incidental or consequential damages arising from use of this manual and products described herein.

This manual and parts thereof must not be reproduced or copied without ABB's written permission.

Keep for future reference.

Additional copies of this manual may be obtained from ABB.

Original instructions.

© Copyright 2024 ABB. All rights reserved.
Specifications subject to change without notice.

Table of contents

Overview of this specification	7
1 Description	9
1.1 Structure	9
1.1.1 Introduction	9
1.1.2 Different robot variants	11
1.2 Applicable standards	13
1.3 Installation	14
1.3.1 Introduction	14
1.3.2 Technical data	15
1.3.3 Mounting the manipulator	19
1.4 Calibration and reference	22
1.4.1 Calibration methods	22
1.4.2 Fine calibration	24
1.5 Robot load and diagrams	25
1.5.1 Introduction	25
1.5.2 Load diagrams	26
1.5.3 Maximum load and moment of inertia for full and limited axis (center line down) movement	28
1.5.4 Wrist torque	30
1.6 Mounting of equipment	31
1.7 Robot motion	35
1.7.1 Introduction	35
1.7.2 Performance according to ISO 9283	37
1.7.3 Velocity	38
1.7.4 Robot stopping distances and times	39
1.8 Customer connections	40
1.9 Maintenance and troubleshooting	41
2 Specification of variants and options	43
2.1 Introduction to variants and options	43
2.2 Manipulator	44
2.3 Floor cables	45
2.3.1 Mains cable	46
2.4 Warranty	47
Index	49

This page is intentionally left blank

Overview of this specification

About this product specification

It describes the performance of the manipulator or a complete family of manipulators in terms of:

- The structure and dimensional prints
- The fulfilment of standards, safety and operating requirements
- The load diagrams, mounting of extra equipment, the motion and the robot reach
- The specification of variant and options available

Usage

Product specifications are used to find data and performance about the product, for example to decide which product to buy. How to handle the product is described in the product manual.

Users

It is intended for:

- Product managers and product personnel
- Sales and marketing personnel
- Order and customer service personnel

References

Reference	Document ID
<i>Product specification - OmniCore C line</i>	3HAC065034-001
<i>Product manual - IRB 1510</i>	3HAC087870-001
<i>Product manual - OmniCore C30 Type A</i>	3HAC089064-001
<i>Product manual - OmniCore C90XT Type A</i>	3HAC089065-001

Revisions

Revision	Description
A	First edition.
B	Published in release 24C. The following updates are done in this revision: <ul style="list-style-type: none"> • Added support for OmniCore C90XT Type A controller. • Added mains cable options [3203].
C	Published in release 24D. The following updates are done in this revision: <ul style="list-style-type: none"> • Updated the section Technical data on page 15.

This page is intentionally left blank

1 Description

1.1 Structure

1.1.1 Introduction

Robot family

The IRB 1510 is a 6-axis industrial robot, designed specifically for manufacturing industries that use flexible robot-based automation. The robot has an open structure that is specially adapted for flexible use, and can communicate extensively with external systems.

Operating system

The robot is equipped with the OmniCore C line controller and robot control software, RobotWare. RobotWare supports every aspect of the robot system, such as motion control, development and execution of application programs, communication etc. See *Operating manual - OmniCore*.

Software product range

We have added a range of software products - all falling under the umbrella designation of Active Safety - to protect not only personnel in the unlikely event of an accident, but also robot tools, peripheral equipment and the robot itself.

Safety

Safety standards valid for complete robot, manipulator and controller.

Additional functionality

For additional functionality, the robot can be equipped with optional software for application support - for example gluing and welding, communication features - network communication - and advanced functions such as multitasking, sensor control etc. For a complete description on optional software, see *Product specification - OmniCore C line*.

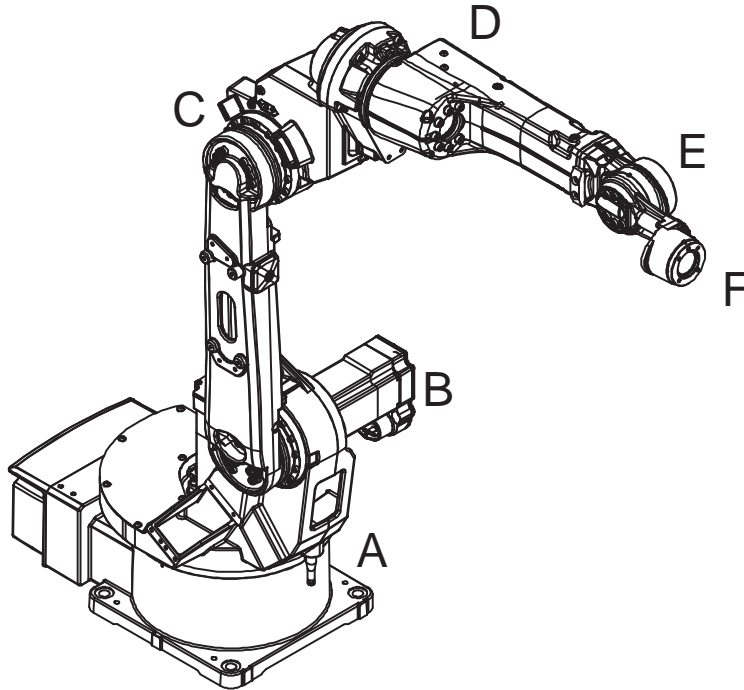
Continues on next page

1 Description

1.1.1 Introduction

Continued

Manipulator axes



xx110000294

Pos	Description	Pos	Description
A	Axis 1	B	Axis 2
C	Axis 3	D	Axis 4
E	Axis 5	F	Axis 6

1.1.2 Different robot variants

General

The IRB 1510 is available in one variant and can only be mounted on the floor or inverted (no tilting allowed around X-axis or Y-axis). See [Robot motion on page 35](#) for limitations.

Robot	Handling capacity (kg)	Reach (m)
IRB 1510ID	4 kg	1.5 m

Manipulator weight

Robot	Weight
IRB 1510ID-4/1.5	170 kg

Other technical data

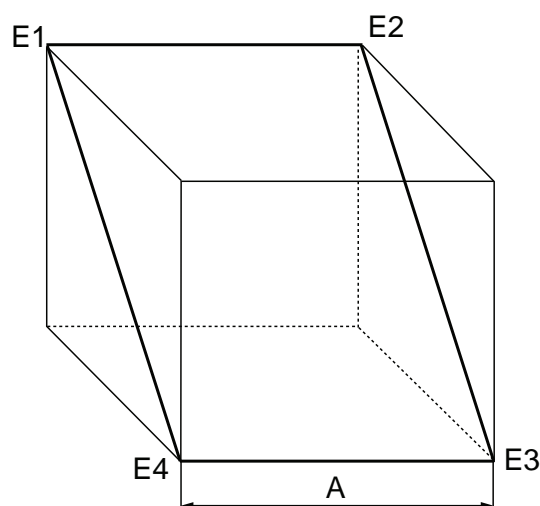
Data	Description	Note
Airborne noise level	The sound pressure level outside the working space	< 70 dB (A) Leq (acc. to Machinery directive 2006/42/EG)

Power consumption

Type of movement	Power consumption (kW) (all variants)
ISO Cube Max. velocity	0.46

Robot in calibration position	All variants (kW)
Brakes engaged	0.10
Brakes disengaged	0.23

Path E1-E2-E3-E4 in the ISO Cube, max.load.



xx100000101

Pos	
A	400 mm

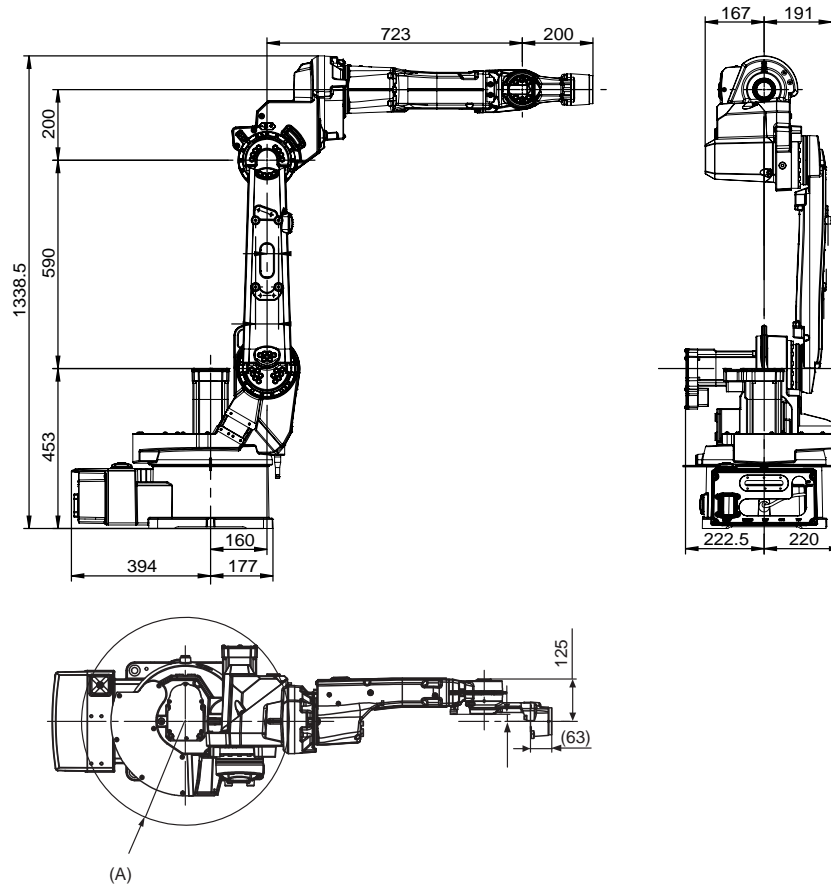
Continues on next page

1 Description

1.1.2 Different robot variants

Continued

Dimensions IRB 1510ID-4/1.5



xx1100000295

Pos	Description
A	Minimum turning radius R=307 mm

1.2 Applicable standards

General

The product is compliant with ISO 10218-1:2011, *Robots for industrial environments - Safety requirements - Part 1 Robots*, and applicable parts in the normative references, as referred to from ISO 10218-1:2011. In case of deviation from ISO 10218-1:2011, these are listed in the declaration of incorporation. The declaration of incorporation is part of the delivery.

Robot standards

Standard	Description
ISO 9283	Manipulating industrial robots – Performance criteria and related test methods
ISO 9787	Robots and robotic devices – Coordinate systems and motion nomenclatures
ISO 9946	Manipulating industrial robots – Presentation of characteristics

Other standards used in design

Standard	Description
IEC 60204-1	Safety of machinery - Electrical equipment of machines - Part 1: General requirements, normative reference from ISO 10218-1
IEC 61000-6-2	Electromagnetic compatibility (EMC) – Part 6-2: Generic standards – Immunity standard for industrial environments
IEC 61000-6-4	Electromagnetic compatibility (EMC) – Part 6-4: Generic standards – Emission standard for industrial environments
ISO 13849-1:2006	Safety of machinery - Safety related parts of control systems - Part 1: General principles for design, normative reference from ISO 10218-1

1 Description

1.3.1 Introduction

1.3 Installation

1.3.1 Introduction

General

IRB 1510ID-4/1.5 can only be mounted on the floor or inverted (no tilting allowed around X-axis or Y-axis). An end effector with max. weight of 4 kg including payload, can be mounted on the tool flange. See [Robot load and diagrams on page 25](#).

Extra equipment can be mounted on the upper arm. See [Mounting of equipment on page 31](#).

Extra loads

Extra load, which is included in the load diagrams, can be mounted on the upper arm. See [Robot load and diagrams on page 25](#).

Working range

Electronic Position Switches can be used on all axes for position indication of the manipulator.

Explosive environments

The robot must not be located or operated in an explosive environment.

1.3.2 Technical data

Weight, robot

The table shows the weight of the robot.

Robot model	Weight
IRB 1510	170 kg



Note

The weight does not include tools and other equipment fitted on the robot.

Mounting positions

The table shows valid mounting options for the manipulator.

Mounting option	Installation angle	Note
Floor mounted	0° ⁱ	
Suspended	180°	

ⁱ A tilt of up to 15° does not affect the payload or reach, but it can have a negative impact on performance and lifetime. The actual value must be set in the system parameters.



Note

The actual mounting angle must always be configured in the system parameters, otherwise the performance and lifetime is affected. See the product manual for details.

Continues on next page

1 Description

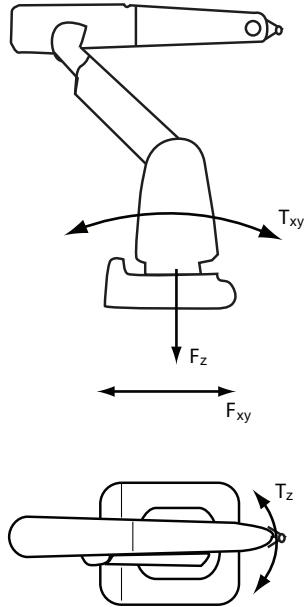
1.3.2 Technical data

Continued

Loads on foundation, robot

The illustration shows the directions of the robots stress forces.

The directions are valid for all floor mounted, suspended and inverted robots.



xx1100000521

F_{xy}	Force in any direction in the XY plane
F_z	Force in the Z plane
T_{xy}	Bending torque in any direction in the XY plane
T_z	Bending torque in the Z plane

The table shows the various forces and torques working on the robot during different kinds of operation.



Note

These forces and torques are extreme values that are rarely encountered during operation. The values also never reach their maximum at the same time!



WARNING

The robot installation is restricted to the mounting options given in following load table(s).

Floor mounted

Force	Endurance load (in operation)	Max. load (emergency stop)
Force xy	± 1900 N	± 4300 N
Force z	1850 ± 900 N	1850 ± 2350 N
Torque xy	± 1550 Nm	± 3900 Nm
Torque z	± 390 Nm	± 1200 Nm


Continues on next page

Suspended

Force	Endurance load (in operation)	Max. load (emergency stop)
Force xy	± 1900 N	± 4250 N
Force z	- 1850 ±750 N	-1850 ±2350 N
Torque xy	± 1550 Nm	± 3900 Nm
Torque z	± 390 Nm	± 1200 Nm

Requirements, foundation

The table shows the requirements for the foundation where the weight of the installed robot is included:

Requirement	Value	Note
Flatness of foundation surface	0.5 mm	Flat foundations give better repeatability of the resolver calibration compared to original settings on delivery from ABB. The value for levelness aims at the circumstance of the anchoring points in the robot base. In order to compensate for an uneven surface, the robot can be recalibrated during installation. If resolver/encoder calibration is changed this will influence the absolute accuracy.
Minimum resonance frequency	22 Hz  Note It may affect the manipulator life-time to have a lower resonance frequency than recommended.	The value is recommended for optimal performance. Due to foundation stiffness, consider robot mass including equipment. ⁱ For information about compensating for foundation flexibility, see the application manual of the controller software, section <i>Motion Process Mode</i> .

ⁱ The minimum resonance frequency given should be interpreted as the frequency of the robot mass/inertia, robot assumed stiff, when a foundation translational/torsional elasticity is added, i.e., the stiffness of the pedestal where the robot is mounted. The minimum resonance frequency should not be interpreted as the resonance frequency of the building, floor etc. For example, if the equivalent mass of the floor is very high, it will not affect robot movement, even if the frequency is well below the stated frequency. The robot should be mounted as rigid as possible to the floor.

Disturbances from other machinery will affect the robot and the tool accuracy. The robot has resonance frequencies in the region 10 – 20 Hz and disturbances in this region will be amplified, although somewhat damped by the servo control. This might be a problem, depending on the requirements from the applications. If this is a problem, the robot needs to be isolated from the environment.

Storage conditions, robot

The table shows the allowed storage conditions for the robot:

Parameter	Value
Minimum ambient temperature	-25° C
Maximum ambient temperature	+55° C
Maximum ambient temperature (less than 24 hrs)	+75° C
Maximum ambient humidity	95% at constant temperature (gaseous only)

Continues on next page

1 Description

1.3.2 Technical data

Continued

Operating conditions, robot

The table shows the allowed operating conditions for the robot:

Parameter	Value
Minimum ambient temperature	+5°
Maximum ambient temperature	+45°
Maximum ambient humidity	95% at constant temperature (gaseous only)

Protection classes, robot

The table shows the available protection types of the robot, with the corresponding protection class.

Protection type	Protection class ⁱ
Manipulator, protection type Standard	IP40

ⁱ According to IEC 60529.

1.3.3 Mounting the manipulator

General

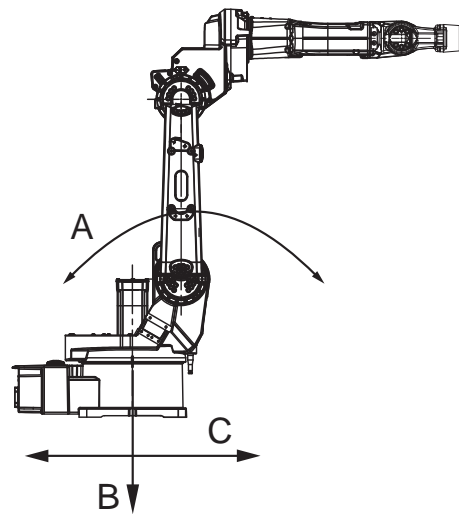
Maximum load in relation to the base coordination system. See Figure below.

Floor Mounted

Force	Endurance load (in operation)	Max. load (emergency stop)
Force xy	± 1900 N	± 4300 N
Force z	1850 ±900 N	1850 ±2350 N
Torque xy	± 1550 Nm	± 3900 Nm
Torque z	± 390 Nm	± 1200 Nm

Suspended

Force	Endurance load (in operation)	Max. load (emergency stop)
Force xy	± 1900 N	± 4250 N
Force z	- 1850 ±750 N	-1850 ±2350 N
Torque xy	± 1550 Nm	± 3900 Nm
Torque z	± 390 Nm	± 1200 Nm



xx110000296

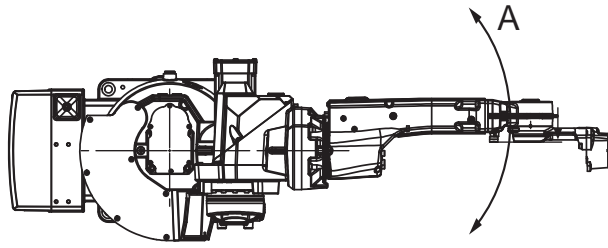
Pos	Description
A	Torque _{xy} (T _{xy})
B	Force _z (F _z)
C	Force _{xy} (F _{xy})

Continues on next page

1 Description

1.3.3 Mounting the manipulator

Continued



xx1100000297

Pos	Description
A	Torque _z (T ₂)

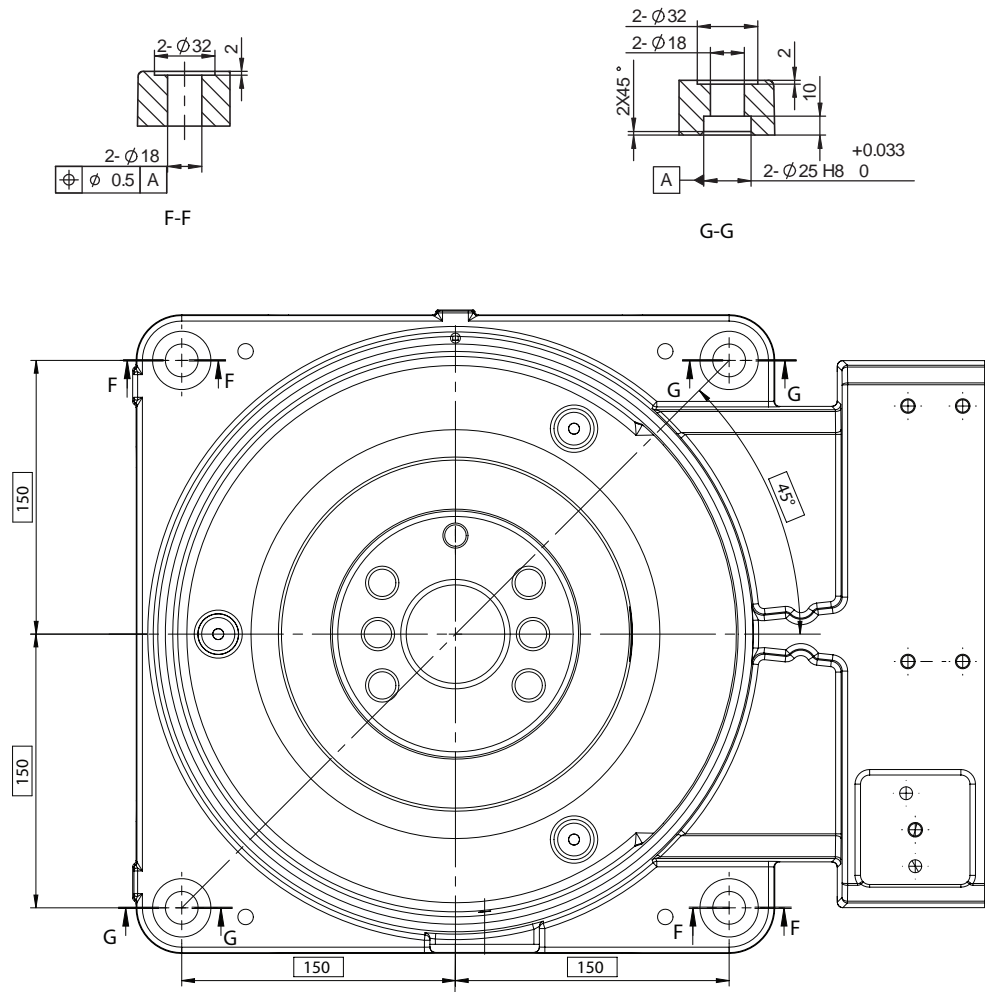
Note regarding M_{xy} and F_{xy}

The bending torque (M_{xy}) can occur in any direction in the XY-plane of the base coordinate system.

The same applies to the transverse force (F_{xy}).

Continues on next page

Fastening holes robot base



xx110000293

Attachment bolts, specification

The table below specifies required bolts and washers for securing the robot at installation site.

Specification	Description
Attachment bolts, 4 pcs	M16 x 60 (installation directly on foundation) M16 x 70/80 (installation on foundation or base plate, using guiding sleeves)
Washers, 4 pcs	17 x 30 x 3
Quality	Quality 8.8
Tightening torque	200 Nm

1 Description

1.4.1 Calibration methods

1.4 Calibration and reference

1.4.1 Calibration methods


Overview

This section specifies the different types of calibration and the calibration methods that are supplied by ABB.

The original calibration data delivered with the robot is generated when the robot is floor mounted. If the robot is not floor mounted, then the robot accuracy could be affected. The robot needs to be calibrated after it is mounted.

More information is available in the product manual.

Types of calibration

Type of calibration	Description	Calibration method
Standard calibration	The calibrated robot is positioned at calibration position. Standard calibration data is found on the SMB (serial measurement board) or EIB in the robot.	Calibration Pendulum
Absolute accuracy calibration (optional)	Based on standard calibration, and besides positioning the robot at synchronization position, the Absolute accuracy calibration also compensates for: <ul style="list-style-type: none">Mechanical tolerances in the robot structureDeflection due to load Absolute accuracy calibration focuses on positioning accuracy in the Cartesian coordinate system for the robot. Absolute accuracy calibration data is found on the serial measurement board (SMB) or other robot memory. A robot calibrated with Absolute accuracy has the option information printed on its name plate (OmniCore). To regain 100% Absolute accuracy performance, the robot must be recalibrated for absolute accuracy after repair or maintenance that affects the mechanical structure.	CalibWare
Optimization	Optimization of TCP reorientation performance. The purpose is to improve reorientation accuracy for continuous processes like welding and gluing. Wrist optimization will update standard calibration data for axes 4 and 5.  Note For advanced users, it is also possible to use the do the wrist optimization using the RAPID instruction <code>WristOpt</code> , see <i>Technical reference manual - RAPID Instructions, Functions and Data types</i> . This instruction is only available for OmniCore robots.	Wrist Optimization

Continues on next page

Brief description of calibration methods

Calibration Pendulum method

Calibration Pendulum is a standard calibration method for calibration of some ABB robots. On OmniCore, this calibration method is only used on IRB 1510, IRB 1520, IRB 2400, and IRB 4400.

Two different routines are available for the Calibration Pendulum method:

- Calibration Pendulum II
- Reference calibration

The calibration equipment for Calibration Pendulum is delivered as a complete toolkit, including the *Operating manual - Calibration Pendulum*, which describes the method and the different routines further.

Wrist Optimization method

Wrist Optimization is a method for improving reorientation accuracy for continuous processes like welding and gluing and is a complement to the standard calibration method.

The actual instructions of how to perform the wrist optimization procedure is given on the FlexPendant.

CalibWare - Absolute Accuracy calibration

The CalibWare tool guides through the calibration process and calculates new compensation parameters. This is further detailed in the *Application manual - CalibWare Field*.

If a service operation is done to a robot with the option Absolute Accuracy, a new absolute accuracy calibration is required in order to establish full performance. For most cases after replacements that do not include taking apart the robot structure, standard calibration is sufficient.

The Absolute Accuracy option varies according to the robot mounting position. This is printed on the robot name plate for each robot. The robot must be in the correct mounting position when it is recalibrated for absolute accuracy.

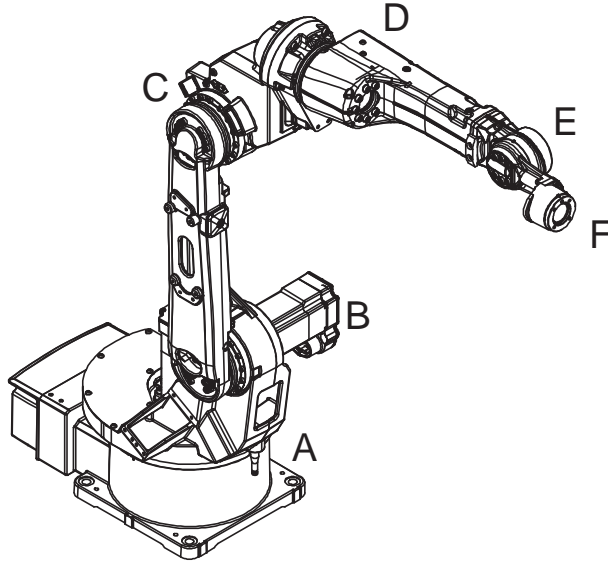
1 Description

1.4.2 Fine calibration

1.4.2 Fine calibration

General

Fine calibration is made using the Calibration Pendulum, see *Operating manual - Calibration Pendulum*.



xx110000294

Pos	Description	Pos	Description
A	Axis 1	B	Axis 2
C	Axis 3	D	Axis 4
E	Axis 5	F	Axis 6

Calibration

Calibration	Position
Calibration of all axes	All axes are in zero position
Calibration of axis 1 and 2	Axis 1 and 2 in zero position
	Axis 3 to 6 in any position
Calibration of axis 1	Axis 1 in zero position
	Axis 2 to 6 in any position

1.5 Robot load and diagrams

1.5.1 Introduction

Information



WARNING

It is very important to always define correct actual load data and correct payload of the robot. Incorrect definitions of load data can result in overloading of the robot.

If incorrect load data is used, and/or if loads outside the load diagram are used, the following parts can be damaged due to overload:

- motors
- gearboxes
- mechanical structure



WARNING

In RobotWare, the service routine LoadIdentify can be used to determine correct load parameters. The routine automatically defines the tool and the load.

See *Operating manual - OmniCore*, for detailed information.



WARNING

Robots running with incorrect load data and/or with loads outside the load diagram, will not be covered by robot warranty.

General

The load diagrams include a nominal payload inertia, J_0 of 0.012 kgm^2 , and an extra load of 10 kg (hose package included) at the upper arm housing. At different moment of inertia the load diagram will be changed. For robots that are allowed tilted, wall or inverted mounted, the load diagrams as given are valid and thus it is also possible to use RobotLoad within those tilt and axis limits.

Control of load case with RobotLoad

To verify a specific load case, use the RobotStudio add-in RobotLoad.

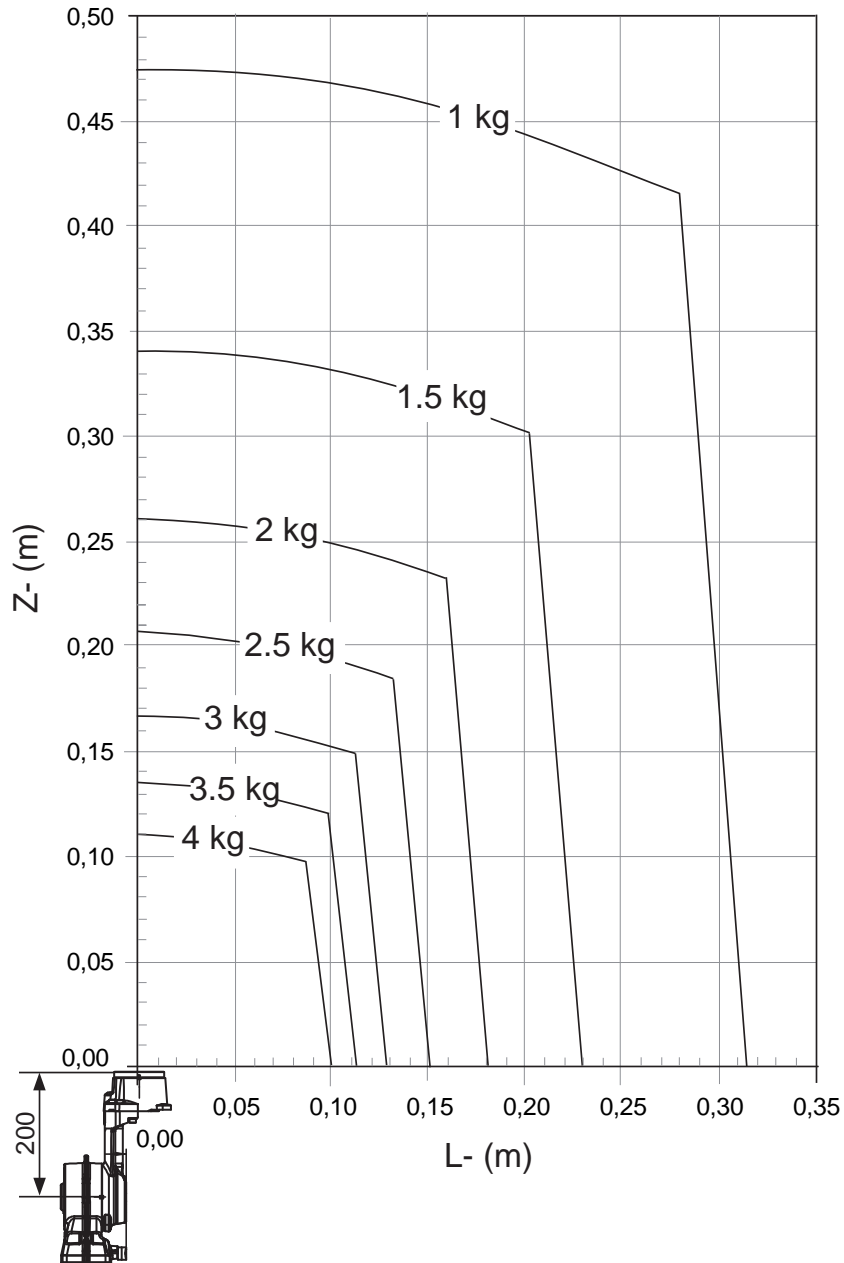
The result from RobotLoad is only valid within the maximum loads and tilt angles. There is no warning if the maximum permitted arm load is exceeded. For over-load cases and special applications, contact ABB for further analysis.

1 Description

1.5.2 Load diagrams

1.5.2 Load diagrams

IRB 1510ID-4/1.5

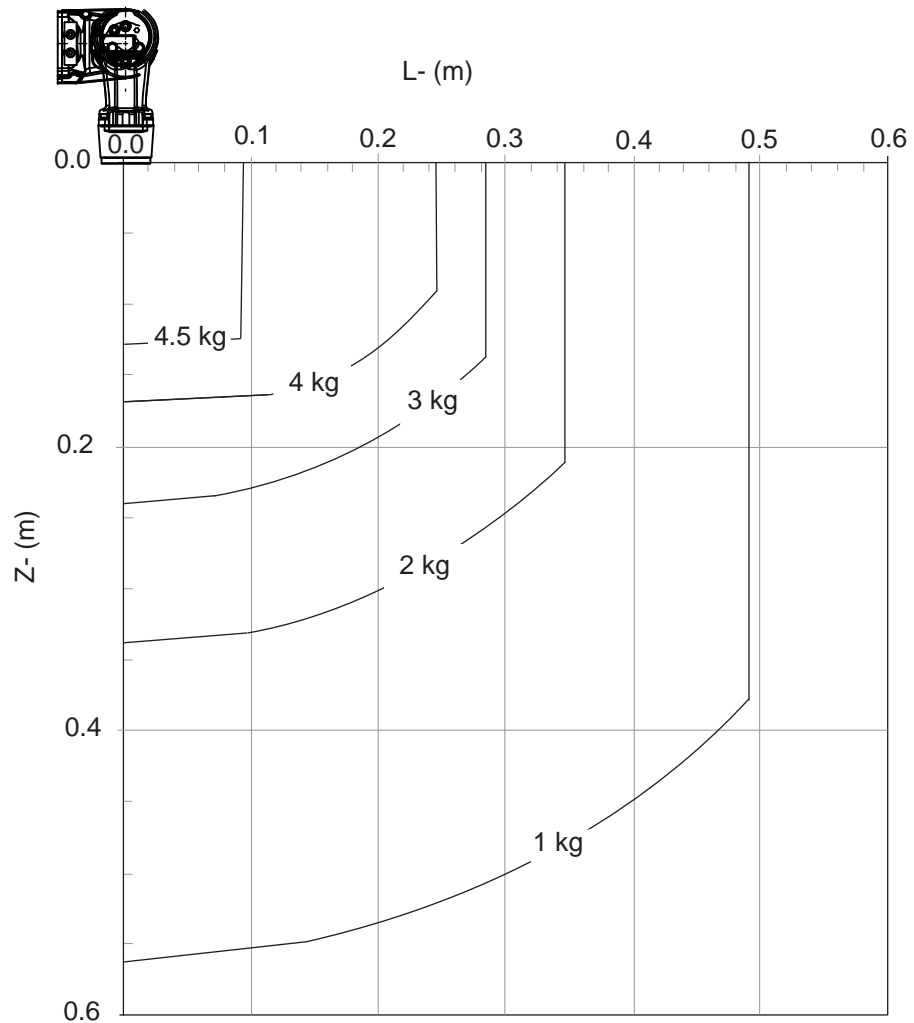


xx1100000300

Extra load of 10 kg (hose package included) at the upper arm housing included in the load diagram.

Continues on next page

IRB 1510ID-4/1.5 "Vertical Wrist" ($\pm 10^\circ$)



xx110000471

Extra load of 10 kg (hose package included) at the upper arm housing included in the load diagram.

For wrist down (turning disk faced downwards) with $\pm 10^\circ$ deviation from vertical line.

	Description
Max load	4.5 kg
Z _{max}	0.128 m
L _{max}	0.093 m

1 Description

1.5.3 Maximum load and moment of inertia for full and limited axis (center line down) movement

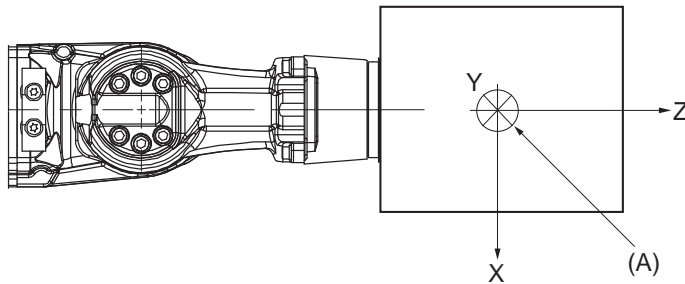
1.5.3 Maximum load and moment of inertia for full and limited axis (center line down) movement

General

Total load given as: Mass in kg, center of gravity (Z and L) in m and moment of inertia (J_{ox} , J_{oy} , J_{oz}) in kgm^2 . $L = \sqrt{X^2 + Y^2}$, see Figure below.

Full movement of axis 5 (+135° to -135°)

Axis	Robot type	Max. value
5	IRB 1510ID-4/1.5	$J_5 = \text{Mass} \times ((Z + 0.200)^2 + L^2) + \max(J_{ox}, J_{oy}) \leq 0.58 \text{ kgm}^2$
6	IRB 1510ID-4/1.5	$J_6 = \text{Mass} \times L^2 + J_{oz} \leq 0.24 \text{ kgm}^2$



xx110000301

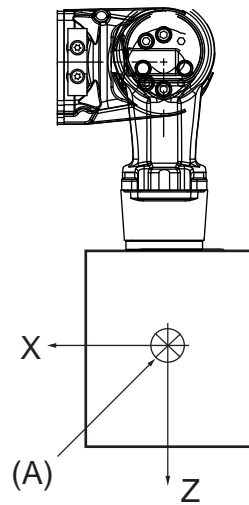
Pos	Description
A	Center of gravity
	Description
J_{ox}, J_{oy}, J_{oz}	Max. moment of inertia around the X, Y and Z axes at center of gravity.

Limited axis 5, Center line down

Axis	Robot type	Max. value
5	IRB 1510ID-4/1.5	$J_5 = \text{Mass} \times ((Z + 0.200)^2 + L^2) + \max(J_{ox}, J_{oy}) \leq 0.58 \text{ kgm}^2$
6	IRB 1510ID-4/1.5	$J_6 = \text{Mass} \times L^2 + J_{oz} \leq 0.24 \text{ kgm}^2$

Continues on next page

1.5.3 Maximum load and moment of inertia for full and limited axis (center line down) movement
Continued



xx110000475

Pos	Description
A	Center of gravity
Description	
J_{ox}, J_{oy}, J_{oz}	Max. moment of inertia around the X, Y and Z axes at center of gravity.

1 Description

1.5.4 Wrist torque

1.5.4 Wrist torque

General

The table below shows the maximum permissible torque due to payload.



Note

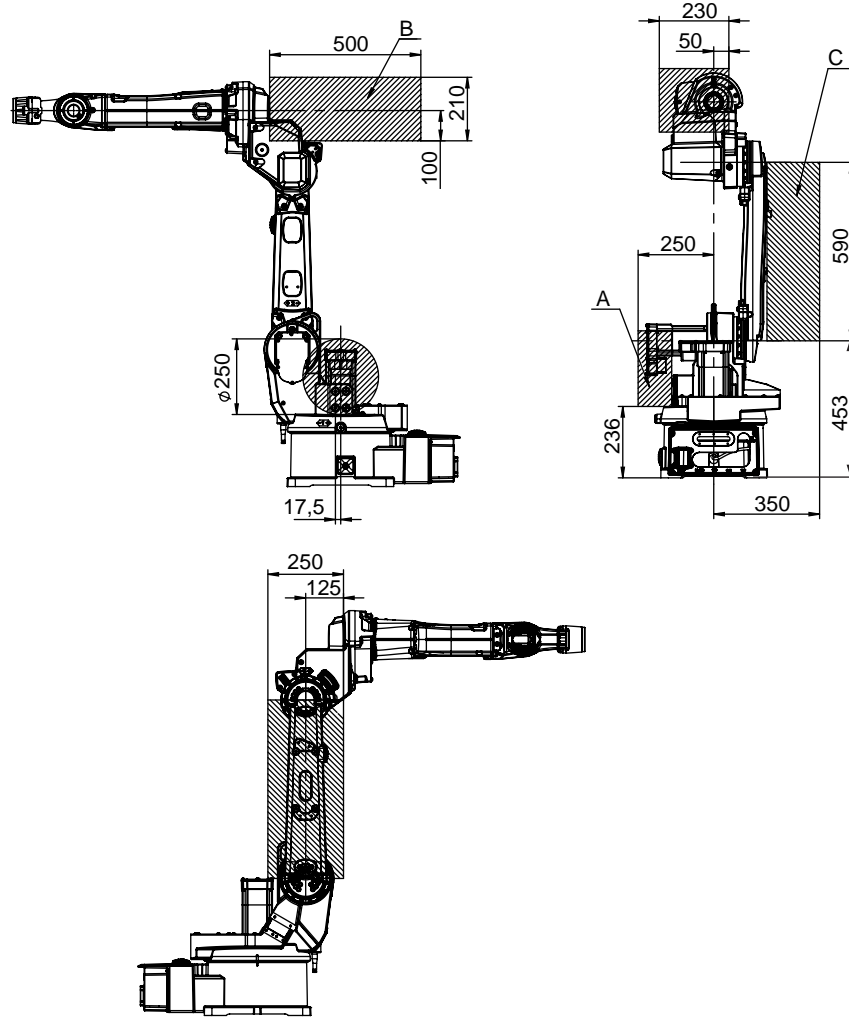
The wrist torque values are for reference only, and should not be used for calculating permitted load offset (position of center of gravity) within the load diagram, since those also are limited by main axes torques as well as dynamic loads. Furthermore, arm loads will influence the permitted load diagram. To find the absolute limits of the load diagram, use the RobotStudio add-in RobotLoad.

Robot type	Max wrist torque axis 4 and 5	Max wrist torque axis 6	Max torque valid at load
IRB 1510ID-4/1.5	12.2 Nm	3.9 Nm	4 kg

1.6 Mounting of equipment

Load areas

Extra loads can be mounted on the wrist, the upper arm housing, and on the frame. Load areas and permitted loads are shown in graphic below. The center of gravity of the extra load shall be within the marked load areas.



xx110000299

Load area Robot	Max. load			
	A	B	C	B+C
IRB 1510ID-4/1.5	20 kg	10 kg	15 kg	25 kg

Continues on next page

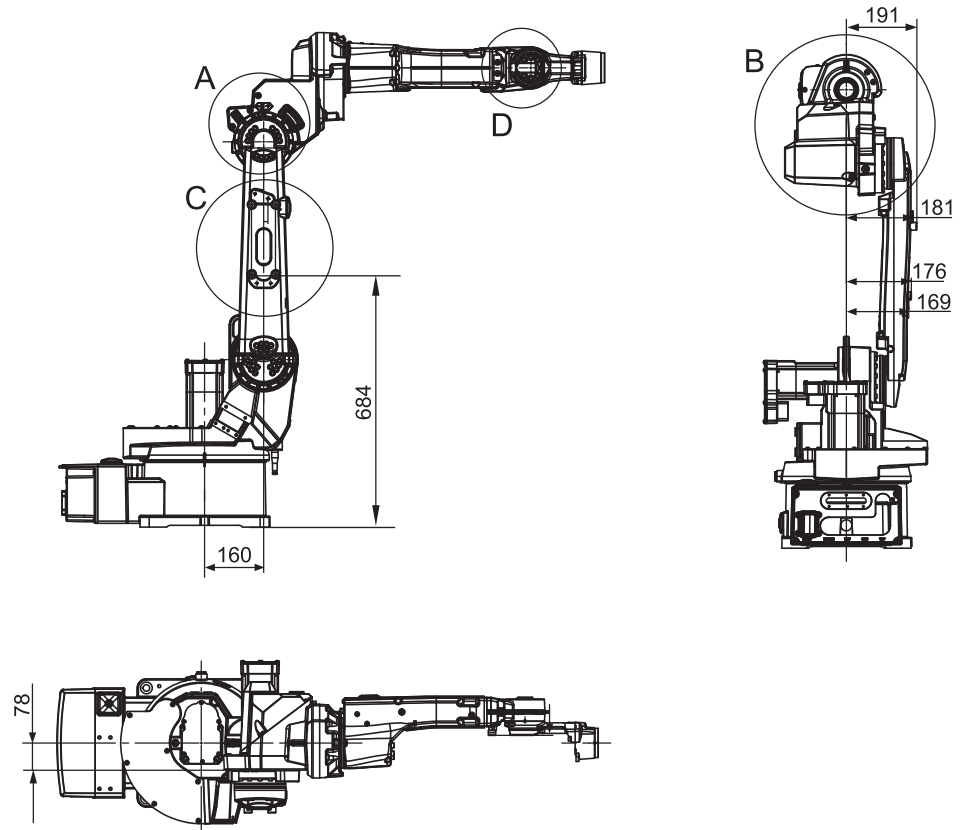
1 Description

1.6 Mounting of equipment

Continued

Holes for mounting of extra equipment

The robot has holes for mounting extra equipment.

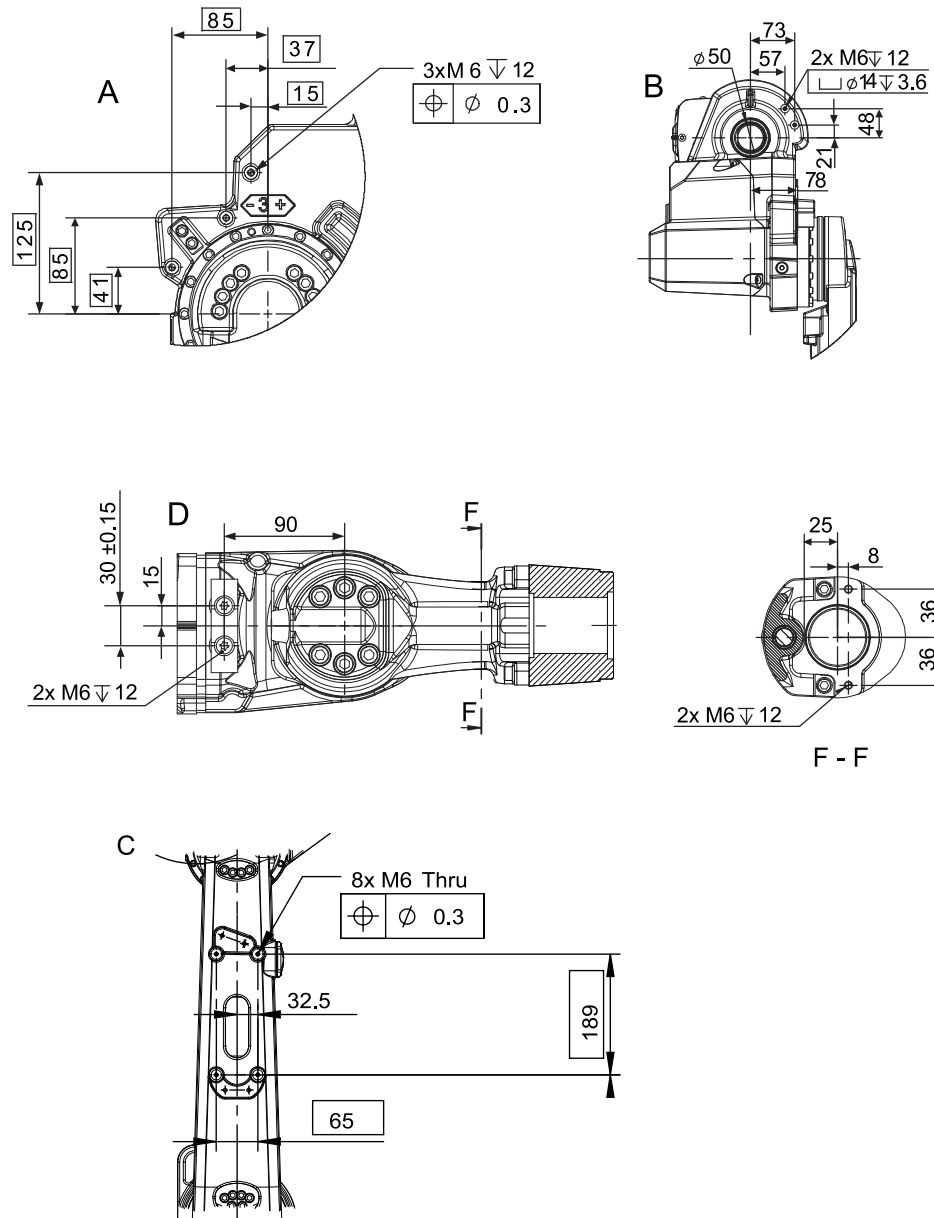


xx110000302

Continues on next page

1 Description

1.6 Mounting of equipment Continued



xx110000303

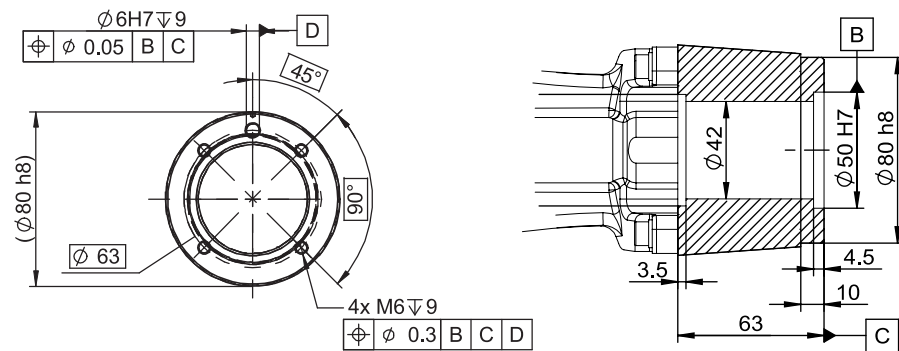
Continues on next page

1 Description

1.6 Mounting of equipment

Continued

Robot tool flange



xx1100000305

Fastener quality

When fitting tools on the tool flange, only use screws with quality 12.9. For other equipment use suitable screws and tightening torque for your application.

1.7 Robot motion

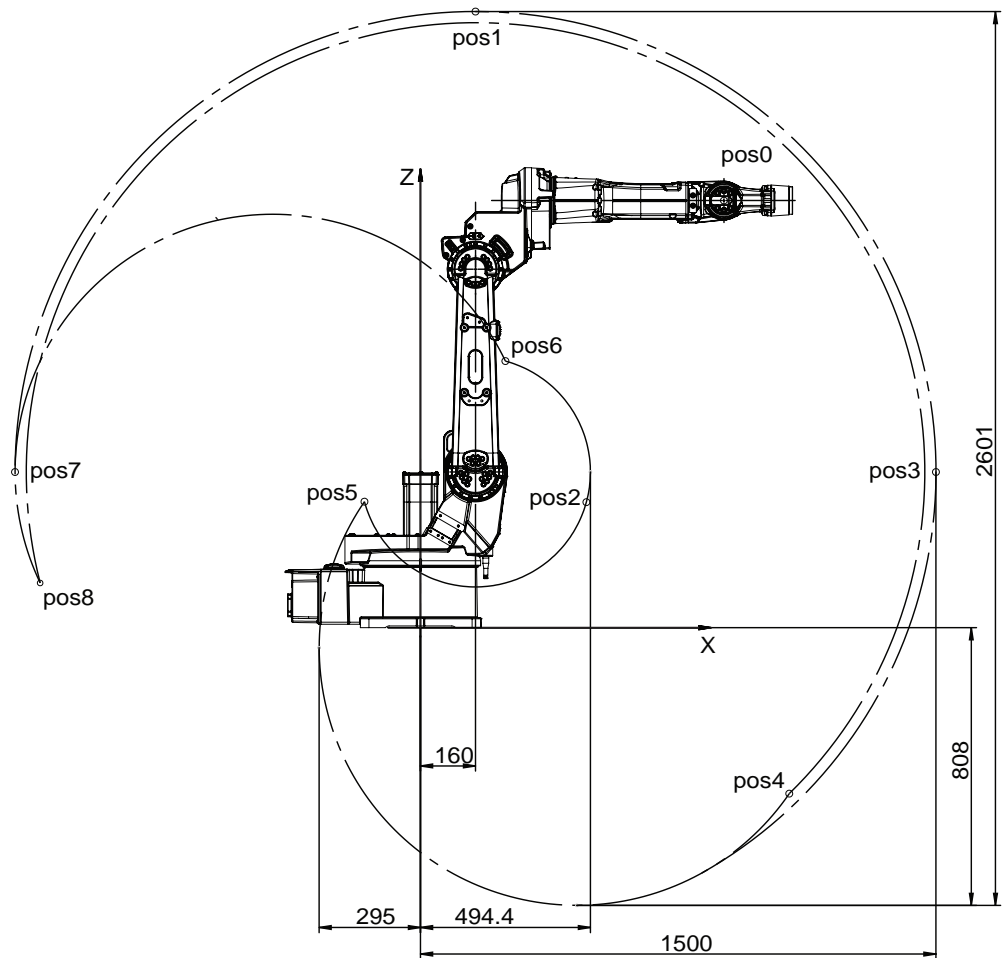
1.7.1 Introduction

IRB 1510ID-4/1.5

Axis	Type of motion	Range of movement
1	Rotation motion	+170° to -170°
2	Arm motion	+150° to -90°
3	Arm motion	+80° to -100°
4	Rotation motion	+155° to -155°
5	Bend motion	+135° to -135°
6	Turn motion	+200° to -200°

Positions at wrist center IRB 1510ID-4/1.5

Working range with extra mechanical stop on axis 3.



xx110000306

Continues on next page

1 Description

1.7.1 Introduction

Continued

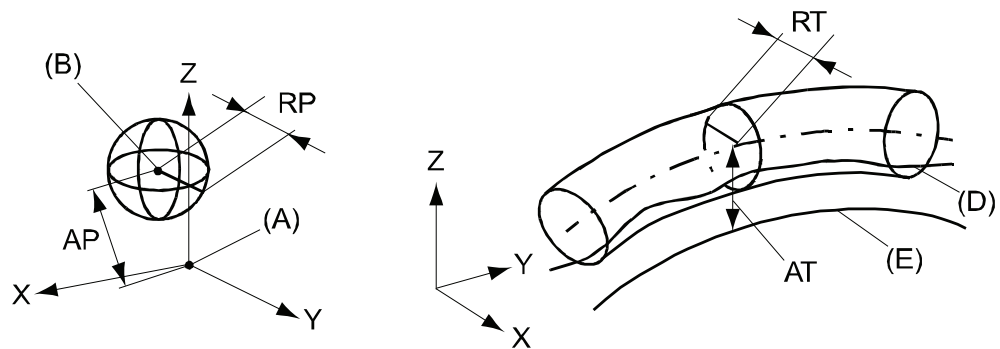
Pos No. see Figure above	X Position (mm)	Z Position (mm)	Axis 2 Angle (degrees)	Axis 3 Angle (degrees)
Pos 0	883	1243	0	0
Pos 1	160	1793	0	-74,5
Pos 2	483	365	0	+80
Pos 3	1500	453	+90	-74,5
Pos 4	1073	-483	+150	-100
Pos 5	-163	367	+150	+80
Pos 6	247	776	-90	+80
Pos 7	-1180	453	-90	-74,5
Pos 8	-1107	130	-90	-100

1.7.2 Performance according to ISO 9283

General

At rated maximum load, maximum offset and 1.6 m/s velocity on the inclined ISO test plane, with all six axes in motion. Values in the table below are the average result of measurements on a small number of robots. The result may differ depending on where in the working range the robot is positioning, velocity, arm configuration, from which direction the position is approached, the load direction of the arm system. Backlashes in gearboxes also affect the result.

The figures for AP, RP, AT and RT are measured according to figure below.



xx080000424

Pos	Description	Pos	Description
A	Programmed position	E	Programmed path
B	Mean position at program execution	D	Actual path at program execution
AP	Mean distance from programmed position	AT	Max deviation from E to average path
RP	Tolerance of position B at repeated positioning	RT	Tolerance of the path at repeated program execution

Description	IRB 1510ID-4/1.5
Pose repeatability, RP (mm)	0.05
Pose accuracy, AP ⁱ (mm)	0.05
Linear path repeatability, RT (mm)	0.35
Linear path accuracy, AT (mm)	1.3
Pose stabilization time, (PSt) to within 0.2 mm of the position (s)	0.1

ⁱ AP according to the ISO test above, is the difference between the taught position (position manually modified in the cell) and the average position obtained during program execution.

The above values are the range of average test results from a number of robots.

1 Description

1.7.3 Velocity

1.7.3 Velocity

Maximum axis speed

Axis No.	IRB 1510ID-4/1.5
1	130°/s
2	140°/s
3	140°/s
4	320°/s
5	380°/s
6	460°/s

1.7.4 Robot stopping distances and times

Introduction

The stopping distances and times for category 0 and category 1 stops, as required by EN ISO 10218-1 Annex B, are listed in *Product specification - Robot stopping distances according to ISO 10218-1 (3HAC048645-001)*.

1 Description

1.8 Customer connections

1.8 Customer connections



Note

No customer/application connections available for IRB 1510ID-4/1.5.

1.9 Maintenance and troubleshooting

General

The robot requires only a minimum maintenance during operation. It is designed to make it as easy to service as possible:

- Maintenance free AC motors are used.
- Oil and grease are used for the gear boxes.
- The cabling is routed for longevity, and in the unlikely event of a failure, its modular design makes it easy to change.
- It has a program memory “battery low” alarm.

Maintenance

The maintenance intervals depend on the use of the robot, the required maintenance activities also depends on selected options. For detailed information on maintenance procedures, see Product Manual - IRB 1510.

This page is intentionally left blank

2 Specification of variants and options

2.1 Introduction to variants and options

General

The different variants and options for the IRB 1510 are described in the following sections. The same option numbers are used here as in the specification form.

The variants and options related to the robot controller are described in the product specification for the controller.

2 Specification of variants and options

2.2 Manipulator

2.2 Manipulator

Manipulator variant

Option	IRB Type	Handling capacity (kg)/Reach (m)
3300-113	1510ID	4/1.5

Manipulator color

Option	Name	Description
209-202	ABB Graphite White standard	Standard color

Manipulator protection

Option	Name	Description
3350-400	Base 40	IP40

Mounting position

Option	Name	Description
3317-1	Inverted	

Resolver connection 7th axis

Option	Description
3322-1	On base

2.3 Floor cables

Manipulator cable length

Option	Lengths
3200-2	7 m
3200-3	15 m

Continues on next page

2 Specification of variants and options

2.3.1 Mains cable

2.3.1 Mains cable

Mains cable

Option	Lengths	Description
3203-1	EU mains cable, 3 m	Cable assembly with CEE7/VII line-side plug
3203-2	UK mains cable, 3 m	Cable assembly with BS1363 line-side plug, 5A fused
3203-5	CN mains cable, 3 m	Cable assembly with CPCS-CCC line-side plug
3203-6	AU mains cable, 3 m	Cable assembly with AS/NZS 3112 line-side
3203-7	All regions cable, 5 m	Cable assembly without line-side plug



Tip

The option *Mains cable* requires option *3000-105 OmniCore E10* or *3000-130 OmniCore C30*.

2.4 Warranty

Warranty

For the selected period of time, ABB will provide spare parts and labor to repair or replace the non-conforming portion of the equipment without additional charges. During that period, it is required to have a yearly *Preventative Maintenance* according to ABB manuals to be performed by ABB. If due to customer restrains no data can be analyzed with ABB Connected Services for robots with OmniCore controllers, and ABB has to travel to site, travel expenses are not covered. The *Extended Warranty* period always starts on the day of warranty expiration. Warranty Conditions apply as defined in the *Terms & Conditions*.



Note

This description above is not applicable for option *Stock warranty* [438-8]

Option	Type	Description
438-1	Standard warranty	Standard warranty is 12 months from <i>Customer Delivery Date</i> or latest 18 months after <i>Factory Shipment Date</i> , whichever occurs first. Warranty terms and conditions apply.
438-2	Standard warranty + 12 months	Standard warranty extended with 12 months from end date of the standard warranty. Warranty terms and conditions apply. Contact Customer Service in case of other requirements.
438-4	Standard warranty + 18 months	Standard warranty extended with 18 months from end date of the standard warranty. Warranty terms and conditions apply. Contact Customer Service in case of other requirements.
438-5	Standard warranty + 24 months	Standard warranty extended with 24 months from end date of the standard warranty. Warranty terms and conditions apply. Contact Customer Service in case of other requirements.
438-6	Standard warranty + 6 months	Standard warranty extended with 6 months from end date of the standard warranty. Warranty terms and conditions apply.
438-7	Standard warranty + 30 months	Standard warranty extended with 30 months from end date of the standard warranty. Warranty terms and conditions apply.
438-8	Stock warranty	<p>Maximum 6 months postponed start of standard warranty, starting from factory shipment date. Note that no claims will be accepted for warranties that occurred before the end of stock warranty. Standard warranty commences automatically after 6 months from <i>Factory Shipment Date</i> or from activation date of standard warranty in WebConfig.</p> <div data-bbox="826 1798 888 1861" data-label="Image"> </div> <div data-bbox="911 1814 976 1845" data-label="Section-Header"> <p>Note</p> </div> <div data-bbox="821 1868 1453 1926" data-label="Text"> <p>Special conditions are applicable, see <i>Robotics Warranty Directives</i>.</p> </div>

This page is intentionally left blank

Index

A

Absolute Accuracy, calibration, 23
ambient humidity
 operation, 18
 storage, 17
ambient temperature
 operation, 18
 storage, 17

C

calibration
 Absolute Accuracy type, 22
 standard type, 22
calibration, Absolute Accuracy, 23
Calibration Pendulum, 24
CalibWare, 22
category 0 stop, 39
category 1 stop, 39
connections, 40

D

dimensions, 12

E

EPS, 14

F

fastening holes, 21
fine calibration, 24
foundation
 requirements, 17

H

handling capacity, 11
humidity
 operation, 18
 storage, 17

L

load areas, 31
load diagrams, 26
loads on foundation, 16

M

maintenance, 41
motion, 35

mounting, 11, 19
 equipment, 31

N

noise level, 11

O

operating conditions, 18
options, 43

P

product standards, 13
protection classes, 18
protection type, 18

R

reach, 11
requirements on foundation, 17
robot
 protection class, 18
 protection types, 18
robot variants, 11

S

safety standards, 13
standards, 13
standard warranty, 47
stock warranty, 47
stopping distances, 39
stopping times, 39
storage conditions, 17

T

temperatures
 operation, 18
 storage, 17
tool flange, 34
torques on foundation, 16

V

variants, 11, 43
velocity, 38

W

warranty, 47
weight, 11, 15
working range, 14
wrist torque, 30



ABB AB

Robotics & Discrete Automation

S-721 68 VÄSTERÅS, Sweden

Telephone +46 10-732 50 00

ABB AS

Robotics & Discrete Automation

Nordlysvegen 7, N-4340 BRYNE, Norway

Box 265, N-4349 BRYNE, Norway

Telephone: +47 22 87 2000

ABB Engineering (Shanghai) Ltd.

Robotics & Discrete Automation

No. 4528 Kangxin Highway

PuDong New District

SHANGHAI 201319, China

Telephone: +86 21 6105 6666

ABB Inc.

Robotics & Discrete Automation

1250 Brown Road

Auburn Hills, MI 48326

USA

Telephone: +1 248 391 9000

abb.com/robotics